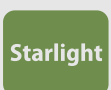


## EmPower AI Camera Series

## ◆ IP-4EB-MVF-PB ◆



## 4MP Lite AI IR Vari-focal Eyeball Network Camera

## Features

- ◆ 4MP, 1/3" CMOS image sensor, low illuminance, high image definition
- ◆ Outputs max. 4MP (2688×1520)@30 fps
- ◆ H.265 codec, high compression rate, low bit rate
- ◆ Built-in IR LED, max. IR distance: 40m
- ◆ ROI, SMART H.264+/H.265+, flexible coding, applicable to various bandwidth and storage environments
- ◆ Rotation mode, WDR, 3D DNR, HLC, BLC, digital watermarking, applicable to various monitoring scenes
- ◆ Intelligent detection: Intrusion, tripwire
- ◆ Abnormality detection: Motion detection, video tampering, scene changing, audio detection, no SD card, SD card full, SD card error, network disconnection, IP conflict, illegal access, voltage detection
- ◆ Supports max. 256 G Micro SD card, Built-in Mic
- ◆ 12V DC/POE power support, IP67 protection, SMD

## System Overview

With advanced deep learning algorithm, EmPower Lite AI series network camera supports some intelligent functions, such as perimeter protection and smart motion detection. It adopts starlight solution, which makes a better image effect in low illuminance.

## Functions

**Smart (H.265+ & H.264+)**

Adopting advanced algorithm of auto stream control according to the environment, EmPower smart encoding technology realizes the higher efficiency than (H.265 & H.264), providing high-quality video, and reducing the cost of storage and transmission.

**Wide dynamic range (WDR)**

EmPower adopts advanced Wide Dynamic Range (WDR) technology. You can get clear details in the environment of strong brightness contrast. In high brightness and back-light environment, bright region and dark region with strong light source, you can also get clear images.

**Starlight**

EmPower Starlight technology mainly applies to the environment of low illumination, and it can provide clear colorful video. Even in the environment of min. illumination, the technology can guarantee the good image effect.

**Intelligent Video Analysis (IVS)**

With advanced video algorithm, EmPower camera supports intelligent detection, such as tripwire and intrusion and so on.

**Smart Motion Detection (SMD)**

With intelligent algorithm, EmPower Smart Motion Detection technology can effectively recognize the target types, flitting the motion detection alarm triggered by non-concerned target types. It can realize effective and accurate alarm.

**Protection (IP67, wide voltage)**

IP67: The camera passes a series of strict test on dust and soak. It has dust-proof function, and the enclosure can work normal after soaking in 1 m deep water for 30 minutes.

Wide voltage: The camera allows ±30% input voltage tolerance (wide voltage range), and it is widely applied to outdoor environment with instable voltage.

# EmPower AI Camera Series

## ◆ IP-4EB-MVF-PB ◆

### Technical Specification

#### Camera

Image Sensor	1/3" 4Megapixel progressive CMOS
Effective Pixels	2688 (H) ×1520 (V)
ROM	128 MB
RAM	512 MB
Scanning System	Progressive
Electronic Shutter Speed	Auto/Manual 1/3 s–1/100000 s
Min. Illumination	0.005 Lux@F1.5
IR Distance	40 m (131.2 ft)
IR On/Off Control	Auto/Manual
IR LEDs Number	2 (IR LEDs)
Pan/Tilt/Rotation Range	Horizontal: 0°–360°; vertical: 0°–78°; rotation: 0°–360°

#### Lens

Lens Type	Motorized vari-focal
Mount Type	φ14
Focal Length	2.7 mm–13.5 mm
Max. Aperture	F1.5
Field of View	Horizontal: 104°–27° Vertical: 55°–15° Diagonal: 124°–31°
Iris Type	Fixed aperture
Close Focus Distance	0.8 m (2.6 ft)

	Lens	Detect	Observe	Recognize	Identify
DORI Distance	W	64.0 m (210.0 ft)	25.6 m (84.0 ft)	12.8 m (42.0 ft)	6.4 m (21.0 ft)
	T	222.0 m (728.3 ft)	88.8 m (291.3 ft)	44.4 m (145.7 ft)	22.2 m (72.8 ft)

#### Professional, Intelligent

Perimeter Protection	Tripwire; intrusion (Recognition of human and vehicle)
Intelligent Search	Work together with Smart NVR to perform refine intelligent search, event extraction and merging to event videos

#### Video

Video Compression	H.265; H.264; H.264H; H.264B; MJPEG
Smart Codec	Yes
Video Frame Rate	Main stream (2688 × 1520@1–25/30 fps) sub stream (704 × 576@1–25 fps/704 × 480@1–30 fps) third stream (1280 × 720@1–25/30 fps)
Stream Capability	3 streams
Resolution	4M (2688 × 1520); 3M (2304 × 1296); 1080p (1920 × 1080); 1.3M (1280 × 960); 720p (1280 × 720); D1 (704 × 576/704 × 480); VGA (640 × 480); CIF (352 × 288/352 × 240)
Bit Rate Control	CBR/VBR
Video Bit Rate	H.264: 3 Kbps–8192 Kbps H.265: 3 Kbps–8192 Kbps

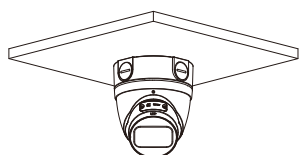
Day/Night	Auto(ICR)/Color/B/W
BLC	Yes
HLC	Yes
WDR	120 dB
White Balance	Auto/natural/street lamp/outdoor/manual/regional custom
Gain Control	Auto/Manual
Noise Reduction	3D DNR
Motion Detection	OFF/ON (4 areas, rectangular)
Region of Interest(Rol)	Yes (4 areas)
Smart IR	Yes
Image Rotation	0°/90°/180°/270° (Support 90°/270° with 1920 × 1080 resolution.)
Mirror	Yes
Privacy Masking	4 areas
Audio	
Built-in MIC	Yes
Audio Compression	G.711a; G.711Mu; G726; AAC
Network	
Network	RJ-45 (10/100 Base-T)
Protocol	IPv4;IPv6;HTTP;HTTPS;TCP;UDP;ARP;RTP;RTSP;RTCP; RTMP;SMTP;FTP;SFTP;DHCP;DNS;DDNS;QoS;UPnP;NTP; Multicast;IGMP;NFS;PPPoE;802.1x;SNMP
Interoperability	ONVIF(Profile S/Profile G);CGI;P2P;Milestone;Genetec
Scene Self-adaptation	Yes
User/Host	20 (Total bandwidth: 64 M)
Edge Storage	FTP; SFTP; Micro SD Card (support max. 256 G); Dahua Cloud; NAS
Browser	IE: IE8, IE9, IE11 Chrome Firefo
Management Software	Unisight VMS
Mobile Phone	IOS; Android
Certification	
Certifications	CE-LVD: EN60950-1 CE-EMC: Electromagnetic Compatibility Directive 2014/30/EU FCC: 47 CFR FCC Part 15, Subpart B UL/CUL: UL60950-1 CAN/CSA C22.2 No.60950-1-07
Power	
Power Supply	12V DC/PoE (802.3af)
Power Consumption	<8.3W
Environment	
Operating Conditions	-30°C to +60°C (-22°F to +140°F)/less than95%
Storage Conditions	-40°C to +60°C (-40°F to +140°F)
Ingress Protection	IP67

# EmPower AI Camera Series

## ◆ IP-4EB-MVF-PB ◆

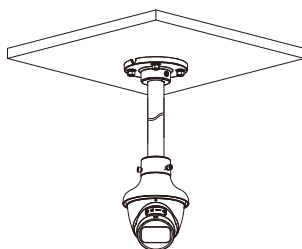
### Structure

Casing	Metal
Dimensions	104.8 mm × Φ122 mm (4.13" × Φ4.8")
Net Weight	685g (1.5 lb)
Gross Weight	828 g (1.8 lb)



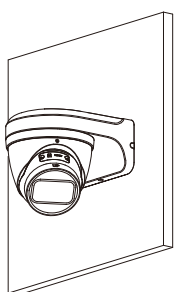
**PFA130-E**

Junction Mount



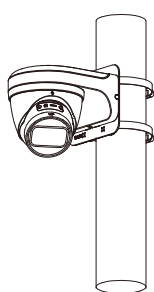
**PFA106+PFB220C**

Ceiling Mount



**PFB203W**

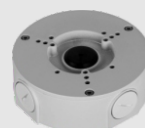
Wall Mount



**PFB203W+PFA152-E**

Pole Mount

## Accessories(Optional)



**PFA130-E**  
Junction Box



**PFB203W**  
Wall Mount



**PFA106**  
Mount Adapter



**PFB220C**  
Ceiling Mount



**PFA152-E**  
Pole Mount



**PFM321D**  
DC12V1A Power Adapter



**LR1002-1ET/1EC**  
Single-port Long Reach Ethernet Over Coax Extender



**PFM900-E**  
Integrated Mount Tester



**PFM114**  
TLC SD card

## Dimensions(mm/inch)

